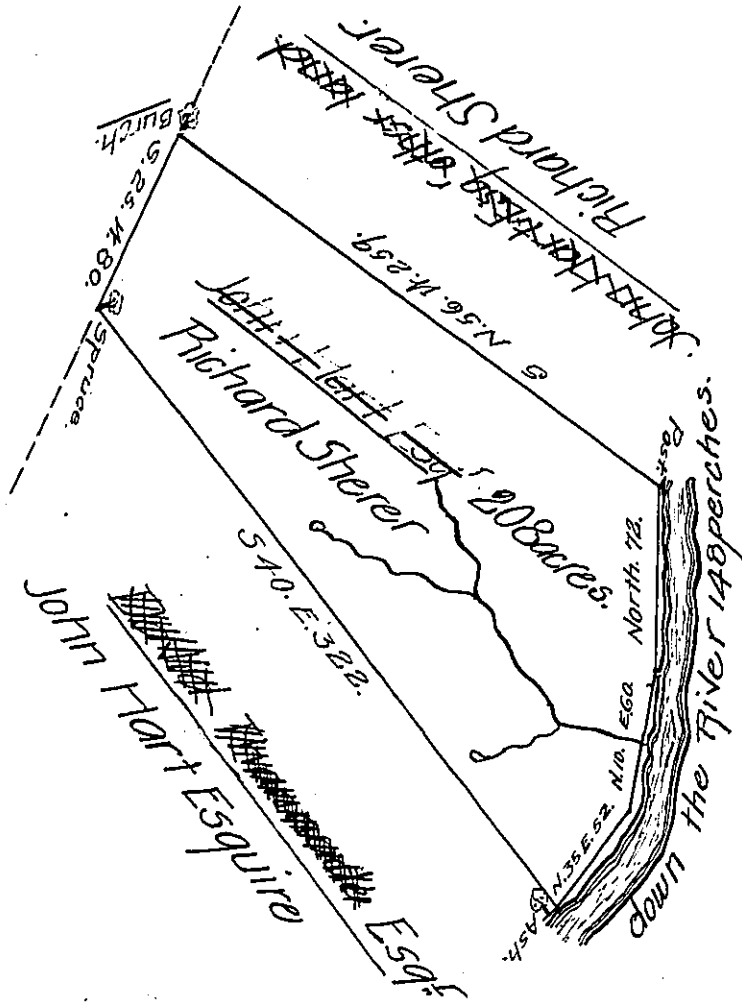


Courses and distances down the river.

N. 35. E. 52.  
N. 10. E. 60.  
N. ~~35~~ - 72.  
184 perches.



A Draught of a tract of Land situate on the North side of the West Branch of Susquehanna about 3 miles above the mouth of Chest Creek in the County of Northumberland containing two hundred and eight Acres and allowance of six acres per Cent. Surveyed November 11<sup>th</sup> 1785. for Richard Sherer in pursuance of a Warrant N<sup>o</sup> 644. bearing Date at Philadelphia the 29<sup>th</sup> day of September 1785.

Richard Sherer D.S.

To John Litterns Esq<sup>r</sup> }  
 Surveyor General. }

IN TESTIMONY that the above is a copy of the original remaining on file in the Department of Internal Affairs of Pennsylvania, made conformably to an Act of Assembly approved the 16th day of February, 1833, I have hereunto set my Hand and caused the Seal of said Department to be affixed at Harrisburg, this Twenty fifth day of January 1907.

*Asa B. Brown*  
 Secretary of Internal Affairs.